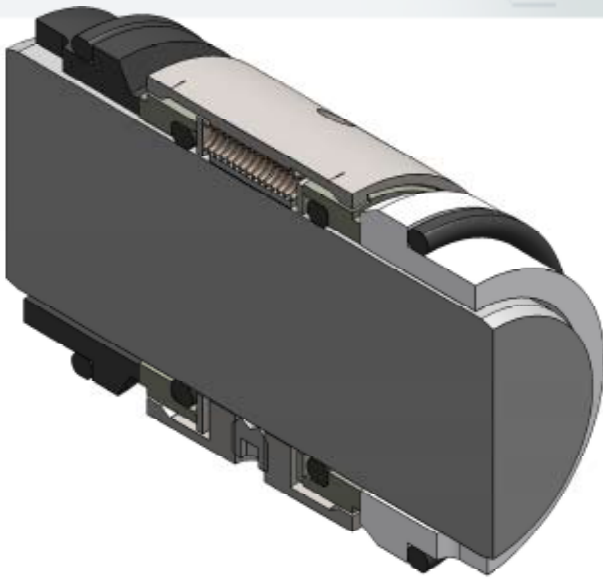




# TIPO BH

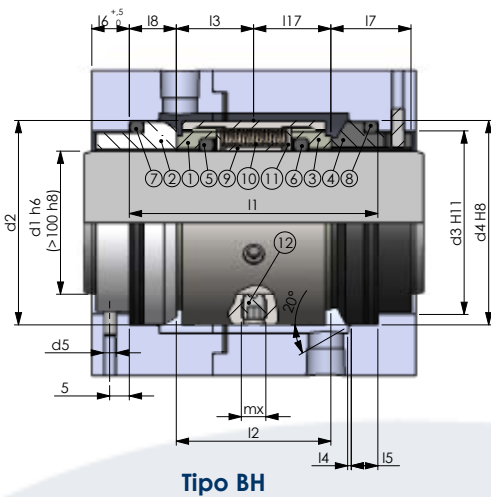
Duplo Back-to-Back



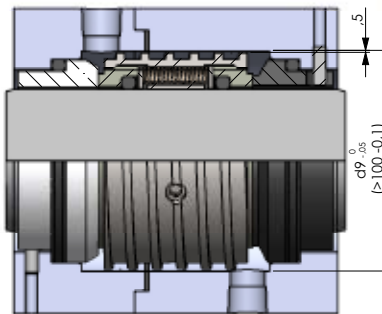
Selo mecânico componente duplo back-to-back de molas multiplas rotativas enclausurada e anel "O" dinâmico, não balanceado, independente do sentido de rotação.

Desenvolvido junto com a família de selo simples BE para fácil reposição de faces.

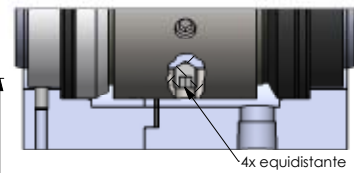
Conforme especificações em norma EN 12756.



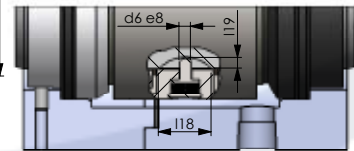
Tipo BH



Tipo BH2



Tipo BH3



Tipo BH5

## BH2

Designação e itens conforme selo BH, porém com anel bombeador incluso no estojo. Dependente do sentido de rotação.

## BH3

Designação e itens conforme selo BH, porém com parafusos de fixação ponta cônica.

## BH4

Designação e itens conforme selo BH3, porém com anel bombeador incluso no estojo. Dependente do sentido de rotação.

## BH5

Designação e itens conforme selo BH, porém com pino comprimido por mola para transmissão de torque,

## BH6

Designação e itens conforme selo BH5, porém com anel bombeador incluso no estojo. Dependente do sentido de rotação.



### DESCRIÇÃO ITENS

- 1 – Face rotativa interna
- 2 – Sede estacionária interna
- 3 – Face rotativa externa
- 4 – Sede estacionária externa
- 5 – Anel "O"
- 6 – Anel "O"
- 7 – Anel "O"
- 8 – Anel "O"
- 9 – Estojo
- 10 – Molas
- 11 – Suporte molas

### LIMITES DE OPERAÇÃO

Pressão: 16bar  
 Temperatura: -20°C a 180°C  
 Velocidade: 10m/s

Limites teóricos variam em função da aplicação e podem ser menores se combinados. Consulte sua aplicação com a Flex-A-Seal.

## OPÇÕES DE MATERIAIS

### Facas

Aço Inox  
Cerâmica  
Grafite  
Carbeto de Silício  
Carbeto de Tungstênio

### Elastômeros

EPDM  
Viton  
Buna-N

### Mola

Aço Inox

### Combinções possíveis de materiais

Rotativa	Sedes											
	G4				G13	G6			G9			
	Aço Inox	Cerâmica	Silício	Tungstênio	Grafite	Aço Inox	Cerâmica	Silício	Aço Inox	Cerâmica	Silício	Tungstênio
Aço Inox					X							
Grafite com antimônio	X	X	X	X		X	X	X	X	X	X	X
Grafite com resina fenólica	X	X	X	X		X	X	X	X	X	X	X
Carbeto de silício			X					X			X	
Carbeto de tungstênio				X				X				X

d1	d2	d3	d4	d5	d6	d9	l1	l2	l3	l4	l5	l6	l7	l8	l17	l18	l19	mx	r
18	33,0	27,0	33,0	3,0	4,0	-	61,0	38,0	19,0	2,0	5,0	9,0	19,5	11,5	17,0	15,0	3,5	M5	1,5
20	35,0	29,0	35,0	3,0	4,0	-	61,0	38,0	19,0	2,0	5,0	9,0	19,5	11,5	17,0	15,0	3,5	M5	1,5
22	37,0	31,0	37,0	3,0	4,0	42,0	61,0	38,0	19,0	2,0	5,0	9,0	19,5	11,5	17,0	15,0	3,5	M5	1,5
24	39,0	33,0	39,0	3,0	4,0	44,0	61,0	38,0	19,0	2,0	5,0	9,0	19,5	11,5	17,0	15,0	3,5	M5	1,5
25	40,0	34,0	40,0	3,0	4,0	45,0	61,0	38,0	19,0	2,0	5,0	9,0	19,5	11,5	17,0	15,0	3,5	M5	1,5
28	43,0	37,0	43,0	3,0	4,0	47,0	62,0	39,0	19,5	2,0	5,0	9,0	19,5	11,5	17,5	15,0	3,5	M6	1,5
30	45,0	39,0	45,0	3,0	4,0	49,0	62,0	39,0	19,5	2,0	5,0	9,0	19,5	11,5	17,5	15,0	3,5	M6	1,5
32	47,0	42,0	48,0	3,0	4,0	51,0	62,0	39,0	19,5	2,0	5,0	9,0	19,5	11,5	17,5	15,0	3,5	M6	1,5
33	48,0	42,0	48,0	3,0	4,0	51,0	62,0	39,0	19,5	2,0	5,0	9,0	19,5	11,5	17,5	15,0	3,5	M6	1,5
35	50,0	44,0	50,0	3,0	4,0	54,0	62,0	39,0	19,5	2,0	5,0	9,0	19,5	11,5	17,5	15,0	3,5	M6	1,5
38	55,0	49,0	56,0	4,0	4,0	59,0	69,0	41,0	20,5	2,0	6,0	9,0	22,0	14,0	18,5	15,0	3,5	M6	1,5
40	57,0	51,0	58,0	4,0	4,0	61,0	70,0	42,0	21,0	2,0	6,0	9,0	22,0	14,0	19,0	15,0	3,5	M6	1,5
43	60,0	54,0	61,0	4,0	4,0	65,0	70,0	42,0	21,0	2,0	6,0	9,0	22,0	14,0	19,0	15,0	3,5	M6	2,5
45	62,0	56,0	63,0	4,0	4,0	66,0	70,0	42,0	21,0	2,0	6,0	9,0	22,0	14,0	19,0	15,0	3,5	M6	2,5
48	65,0	59,0	66,0	4,0	4,0	69,0	70,0	42,0	21,0	2,0	6,0	9,0	22,0	14,0	19,0	15,0	3,5	M6	2,5
50	67,0	62,0	70,0	4,0	4,0	71,0	73,0	43,0	21,5	2,5	6,0	9,0	23,0	15,0	19,5	15,0	3,5	M6	2,5
53	70,0	65,0	73,0	4,0	4,0	75,0	73,0	43,0	21,5	2,5	6,0	9,0	23,0	15,0	19,5	15,0	3,5	M6	2,5
55	72,0	67,0	75,0	4,0	4,0	76,0	73,0	43,0	21,5	2,5	6,0	9,0	23,0	15,0	19,5	15,0	3,5	M8	2,5
58	79,0	70,0	78,0	4,0	5,0	83,0	86,0	56,0	28,0	2,5	6,0	9,0	23,0	15,0	23,5	19,0	3,5	M8	2,5
60	81,0	72,0	80,0	4,0	5,0	85,0	86,0	56,0	28,0	2,5	6,0	9,0	23,0	15,0	23,5	19,0	3,5	M8	2,5
63	84,0	75,0	83,0	4,0	5,0	88,0	85,0	55,0	27,5	2,5	6,0	9,0	23,0	15,0	24,5	19,0	3,5	M8	2,5
65	86,0	77,0	85,0	4,0	5,0	95,0	85,0	55,0	27,5	2,5	6,0	9,0	23,0	15,0	24,5	19,0	3,5	M8	2,5
68	89,0	81,0	90,0	4,0	5,0	93,0	91,0	55,0	27,5	2,5	7,0	9,0	26,0	18,0	24,5	19,0	3,5	M8	2,5
70	91,0	83,0	92,0	4,0	5,0	95,0	92,0	56,0	28,0	2,5	7,0	9,0	26,0	18,0	23,5	19,0	3,5	M8	2,5
75	99,0	88,0	97,0	4,0	5,0	105,0	92,0	56,0	28,0	2,5	7,0	9,0	26,0	18,0	25,5	19,0	3,5	M8	2,5
80	104,0	95,0	105,0	4,0	5,0	109,0	92,5	56,0	28,0	3,0	7,0	9,0	26,2	18,2	25,5	19,0	3,5	M8	2,5
85	109,0	100,0	110,0	4,0	5,0	114,0	92,5	56,0	28,0	3,0	7,0	9,0	26,2	18,2	25,0	19,0	3,5	M8	2,5
90	114,0	105,0	115,0	4,0	5,0	119,0	92,5	56,0	28,0	3,0	7,0	9,0	26,2	18,2	25,5	19,0	3,5	M8	2,5
95	119,0	110,0	120,0	4,0	5,0	124,0	90,5	56,0	28,0	3,0	7,0	9,0	25,2	17,2	25,0	19,0	3,5	M8	2,5
100	124,0	115,0	125,0	4,0	5,0	129,0	90,5	56,0	28,0	3,0	7,0	9,0	25,2	17,2	25,0	19,0	3,5	M8	2,5
105	138,0	122,0	134,3	5,0	7,0	143,0	108,0	68,0	34,0	2,0	10,0	-	30,0	20,0	30,5	22,0	3,5	M8	-
110	143,0	128,0	140,3	5,0	7,0	148,0	110,0	70,0	35,0	2,0	10,0	-	30,0	20,0	31,5	22,0	3,5	M8	-
115	148,0	136,0	148,3	5,0	7,0	153,0	110,0	70,0	35,0	2,0	10,0	-	30,0	20,0	31,5	22,0	3,5	M8	-
120	153,0	138,0	150,3	5,0	7,0	158,0	110,0	70,0	35,0	2,0	10,0	-	30,0	20,0	31,5	22,0	3,5	M8	-
125	158,0	142,0	154,3	5,0	7,0	163,0	110,0	70,0	35,0	2,0	10,0	-	30,0	20,0	31,5	22,0	3,5	M8	-
130	163,0	146,0	158,3	5,0	7,0	168,0	110,0	70,0	35,0	2,0	10,0	-	30,0	20,0	31,5	22,0	3,5	M8	-
135	168,0	152,0	164,3	5,0	7,0	173,0	110,0	70,0	35,0	2,0	10,0	-	30,0	20,0	31,5	22,0	3,5	M8	-
140	173,0	156,0	168,3	5,0	7,0	178,0	110,0	70,0	35,0	2,0	10,0	-	30,0	20,0	31,5	22,0	3,5	M8	-
145	178,0	161,0	173,3	5,0	7,0	183,0	110,0	70,0	35,0	2,0	10,0	-	30,0	20,0	31,5	22,0	3,5	M8	-
150	183,0	168,0	180,3	5,0	7,0	188,0	114,0	70,0	35,0	2,0	10,0	-	32,0	22,0	31,5	22,0	3,5	M8	-
155	191,0	173,0	185,3	5,0	7,0	196,0	127,0	79,0	39,5	2,0	12,0	-	34,0	24,0	35,5	22,0	3,5	M8	-
160	196,0	178,0	190,3	5,0	7,0	201,0	127,0	79,0	39,5	2,0	12,0	-	34,0	24,0	35,5	22,0	3,5	M8	-
165	201,0	183,0	195,3	5,0	7,0	206,0	127,0	79,0	39,5	2,0	12,0	-	34,0	24,0	35,5	22,0	3,5	M8	-
170	206,0	188,0	200,3	5,0	7,0	211,0	127,0	79,0	39,5	2,0	12,0	-	34,0	24,0	35,5	22,0	3,5	M8	-
175	211,0	193,0	205,3	5,0	7,0	216,0	127,0	79,0	39,5	2,0	12,0	-	34,0	24,0	35,5	22,0	3,5	M8	-
180	216,0	207,0	219,3	5,0	7,0	221,0	135,0	79,0	39,5	2,0	12,0	-	38,0	28,0	35,5	22,0	3,5	M8	-
185	221,0	212,0	224,3	5,0	7,0	226,0	135,0	79,0	39,5	2,0	12,0	-	38,0	28,0	35,5	22,0	3,5	M8	-
190	226,0	217,0	229,3	5,0	7,0	231,0	135,0	79,0	39,5	2,0	12,0	-	38,0	28,0	35,5	22,0	3,5	M8	-
195	231,0	222,0	234,3	5,0	7,0	236,0	135,0	79,0	39,5	2,0	12,0	-	38,0	28,0	35,5	22,0	3,5	M8	-
200	236,0	227,0	239,3	8,0	7,0	241,0	135,0	79,0	39,5	2,0	12,0	-	38,0	28,0	35,5	22,0	3,5	M8	-

Dimensões em milímetros  
Tolerâncias para comprimento de trabalho  
±0,5mm

Caso sua aplicação seja diferente, consulte a Flex-A-Seal

Distribuído por:



### BRASIL

Rua Javaés, 441/443  
Bom Retiro - SP  
CEP: 01130-010  
Fone/Fax: (11) 3736-7373  
e-mail: vendas@flexaseal.com.br  
www.flexaseal.com.br

### USA

1 Jackson Street PO Box 184  
Essex Junction, VT 05453-0184 USA  
Phone: 1-800-426-3594 - 1-802-878-8307  
Fax: 1-802-878-2479  
e-mail: sales@flexaseal.com  
www.flexaseal.com